

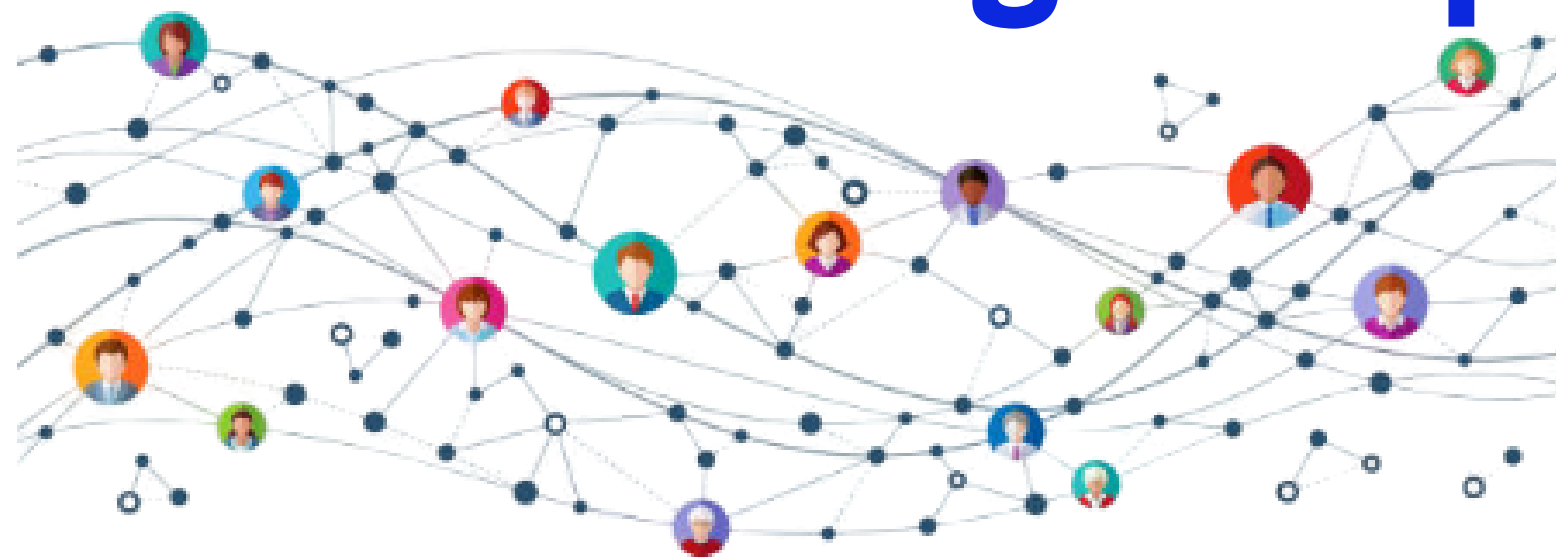
# CONTACT TRACING



Public Health Departments around the world use contact tracing as tool to combat pandemics and future disease outbreaks. Contact tracing has been used for decades-  
But never at the scale needed for COVID-19.

## Why Contact Tracing is Important

Identifies **HOW** a person got infected



Identifies **WHO** may have been exposed

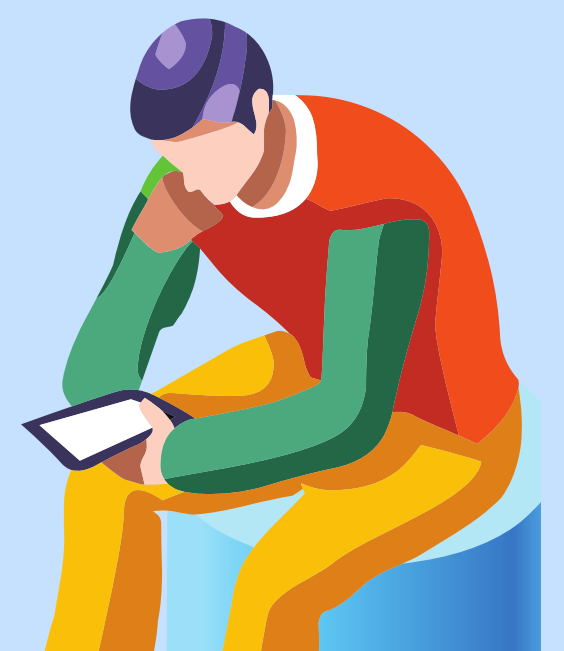
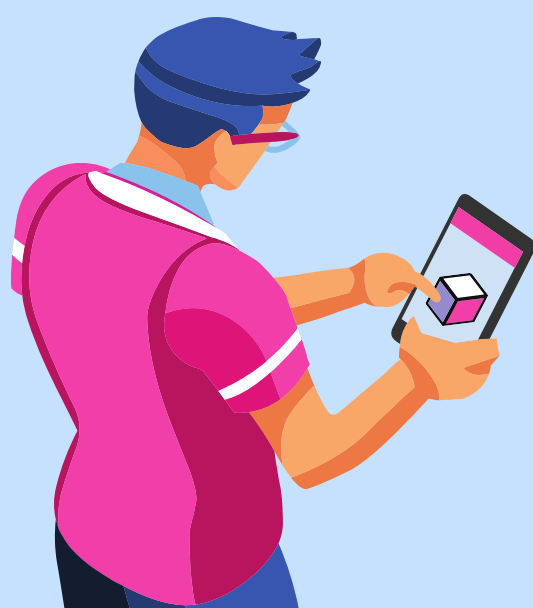
And connects **YOUR** contacts with medical care, support resources, and guidance.

If you test positive, not sharing your contacts is a missed opportunity to protect others and the progress Chester County has made.

 **Your Privacy is Key** 

Your name and personal information will NEVER be shared.

## Answer the Call...



Protect the Health of Our Community. Keep Our Businesses Open.